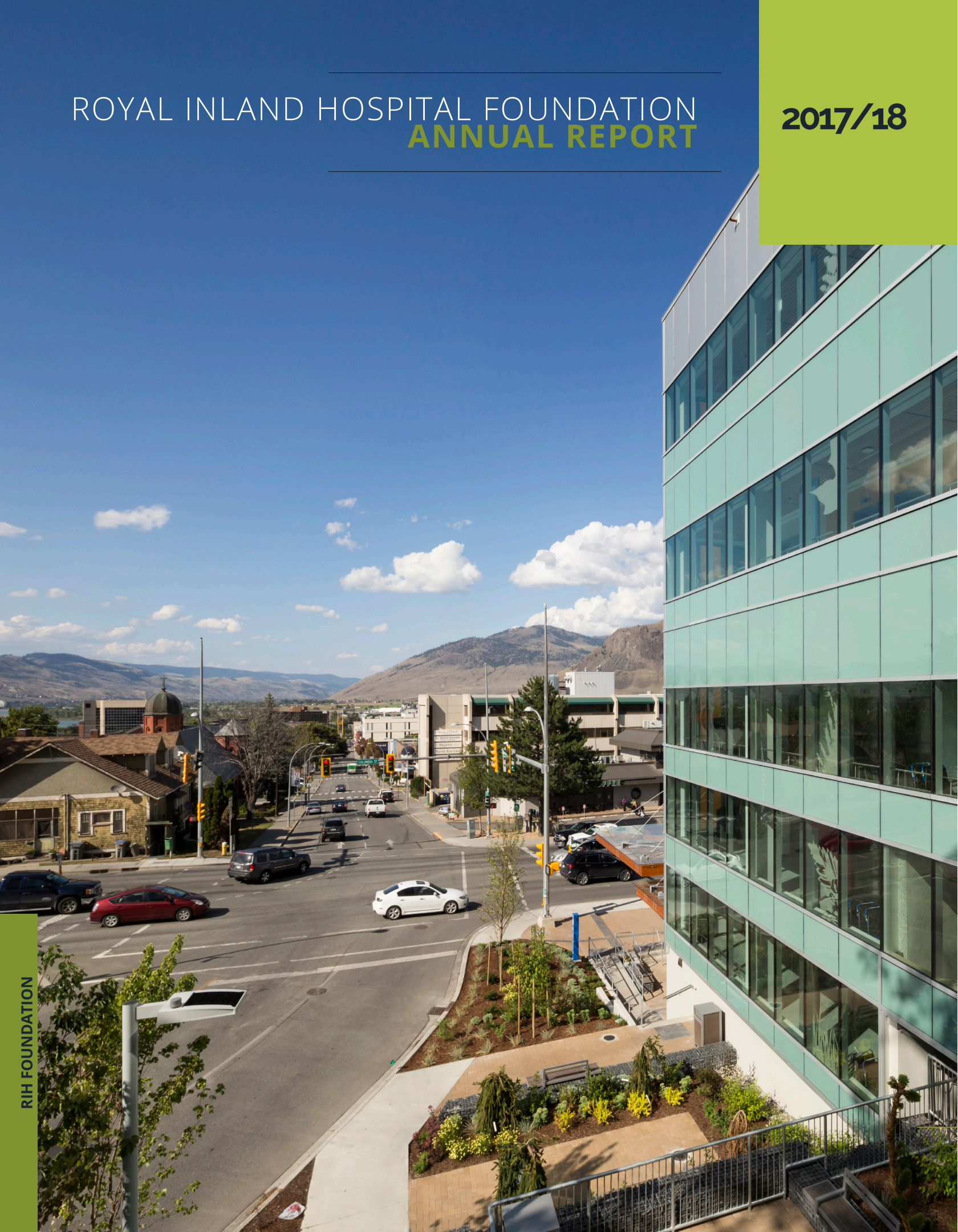


ROYAL INLAND HOSPITAL FOUNDATION ANNUAL REPORT

2017/18



RIH FOUNDATION

MESSAGE FROM THE CEO + BOARD CHAIR

Heidi Coleman and Eric Davis



Dear Friends and Supporters,

This past year, the Foundation provided the hospital with more health care grants than ever before. Through the incredible support of our donors, we funded more innovative equipment and medical tools, patient comfort items, and educational opportunities for staff that increased knowledge and contributed to patient care excellence throughout the hospital. Additionally, donor generosity led to support for the new RIH Research Department and also helped with the recruitment of new specialists to our city.

A patient's journey can start and finish in the Emergency Department, or can sometimes follow a longer path of care. Regardless, the physicians and healthcare teams involved are supported by life-saving equipment and expertise that you have helped to fund.

Looking to the future of healthcare at RIH, the Foundation staff and Board of Directors are excited to work closely with our community and outlying areas to ensure that care is available locally and supported by future developments.

"Real generosity toward the future, lies in giving all in the present" – Albert Camus

Over the next few years, you will hear more from us as we fundraise for both a new Patient Care Tower along with extensive renovations in the existing hospital. As the hospital and Foundation embark on these new ventures, we thank you for all of your generosity and urge you to consider how you can continue to make a difference to healthcare in our community.

Kamloops is growing; but we are still so connected. RIH is our one and only hospital and because of your support, we continue to move forward to offer patients compassionate and advanced care.

Sincerely,

ERIC DAVIS

Board Chair

HEIDI COLEMAN

CEO

2017/18 **BOARD OF DIRECTORS**



Eric Davis
Chair
Davis Wealth Management



Tammy Robertson
Vice Chair
City of Kamloops



Brenda Donaldson
Secretary/Treasurer
Brenda Colman and Associates



Mark Bartle
Director
Gillespie & Company LLP



Kelly Hall
Director
New Cap Radio



Amanda Hobson
Director
BCLC



Pam Fawcett
Director
Kelson Group



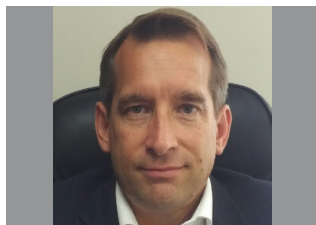
Nancy Matthews
Director
Auxiliary Representative



Kerri Priddle
Director
Chahal Priddle LLP



Tracey Rannie
Director
Royal Inland Hospital



Rob Splane
Director
Sun Country Toyota

Not pictured:

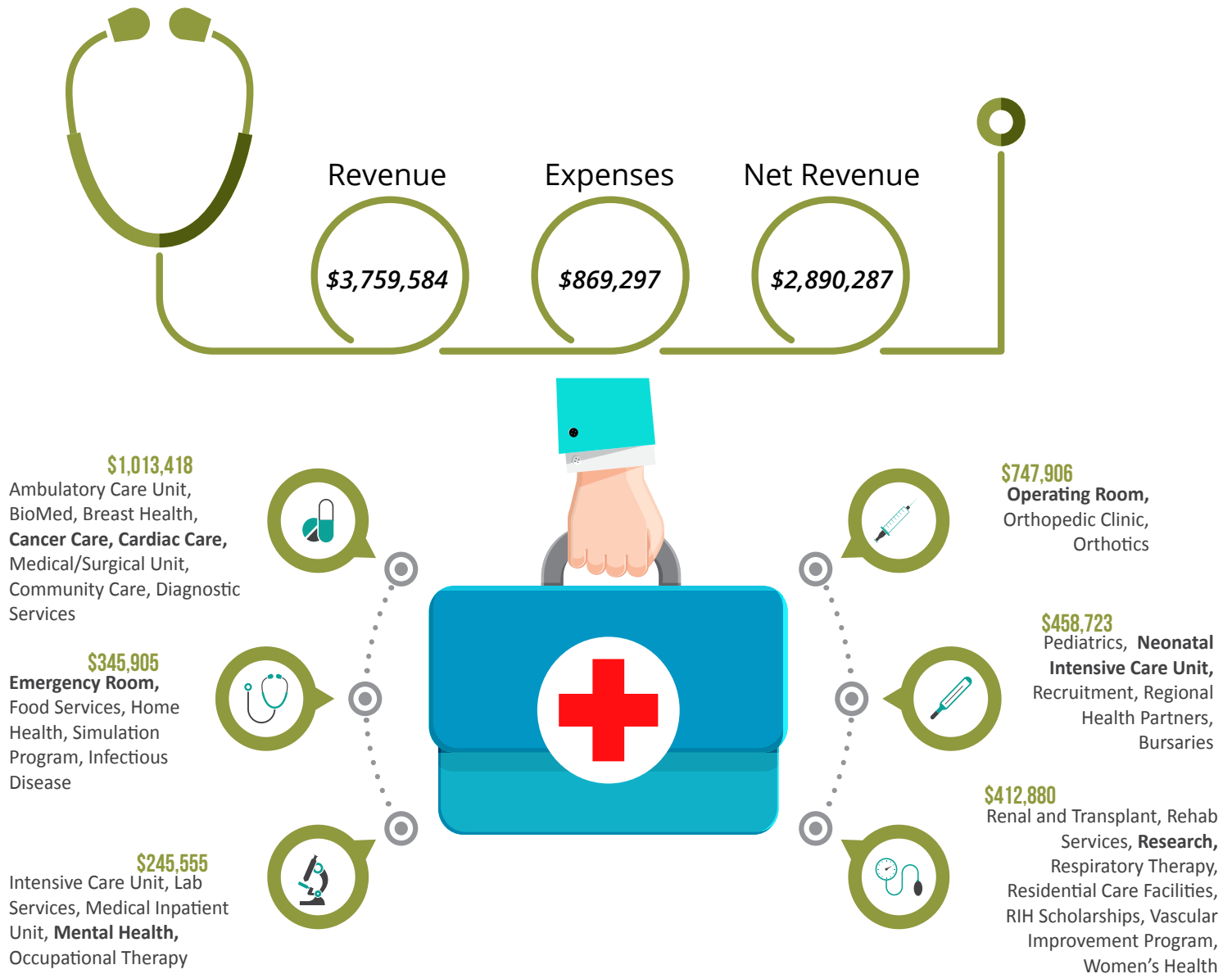
Dr Anise Barton, *Director, Royal Inland Hospital*

Garth Buchko, *Director, Retired Radio NL*

Jacqui Schneider, *Director, Highland Valley Copper*

2017/18 RIHF **FINANCIAL SUMMARY**

*Financial Statement of Revenues, Expenses and Grants
(in \$) for the 12 month period ending March 31, 2018.*



Grants to RIH, Regional Health Partners and Bursaries*



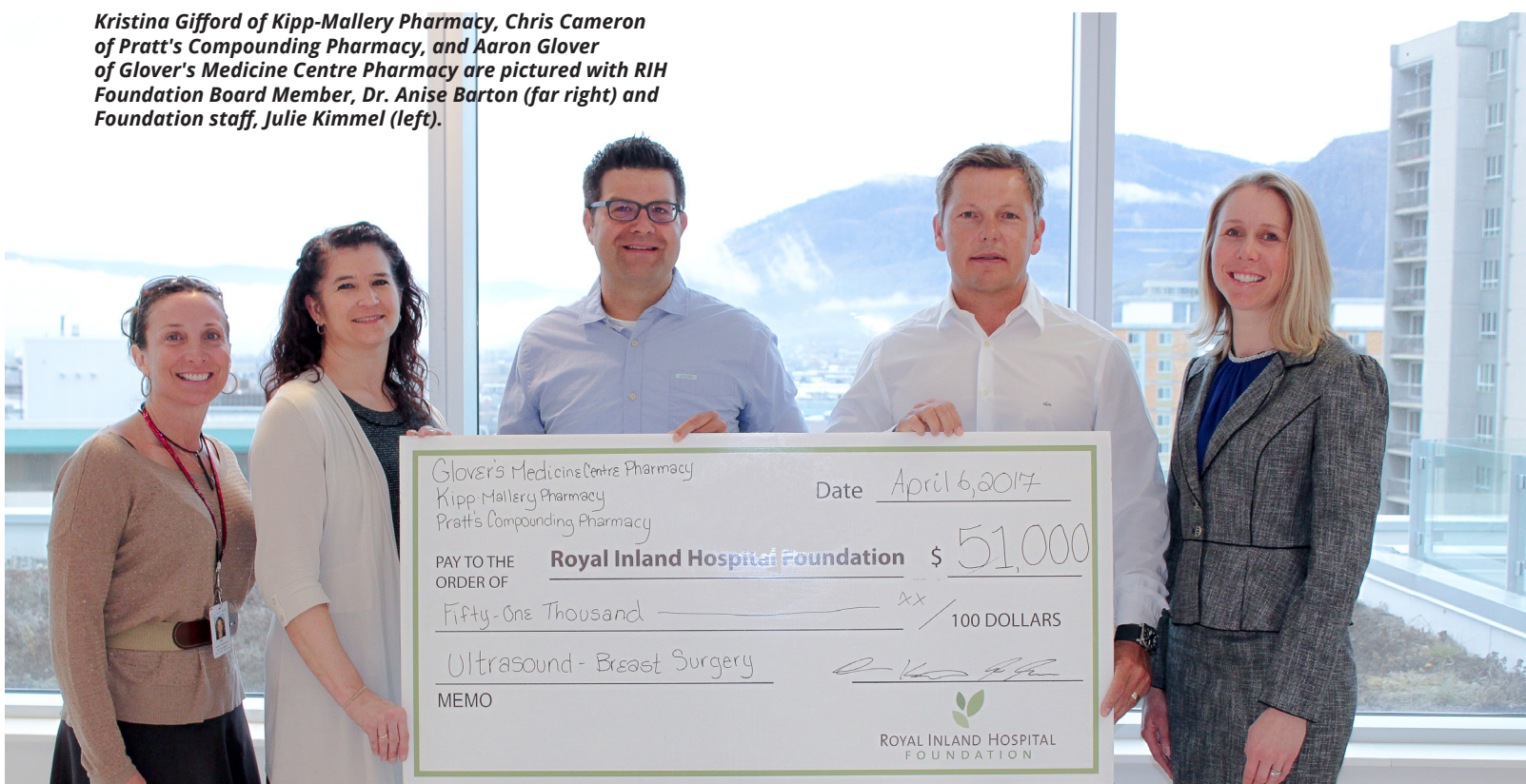
RIH
\$3,093,696



Regional Health Partners / Bursaries
\$ 130,691

**Donation revenue from previous years was used to finance the excess grants paid to RIH this fiscal year*

Kristina Gifford of Kipp-Mallery Pharmacy, Chris Cameron of Pratt's Compounding Pharmacy, and Aaron Glover of Glover's Medicine Centre Pharmacy are pictured with RIH Foundation Board Member, Dr. Anise Barton (far right) and Foundation staff, Julie Kimmel (left).



State of the art equipment at RIH is vital to the healthcare of the community

Ultrasound machines are essential in detection and diagnosis at RIH offering extraordinary images and innovative solutions to patient care. They are becoming a more common tool for physicians and other medical professionals to use throughout the hospital—not just in the Medical Imaging department. In 2017, donor support led to the purchase of five new ultrasound machines for departments and clinics both in the hospital and community setting including the TRFO Maternity Clinic, the Ambulatory Care Unit, the Rae Fawcett Simulation Centre, the Operating Room (OR) and the Community pain management program.

Dr. Anise Barton, a general surgeon at RIH advocated for an ultrasound in the OR that would specifically benefit patients with breast tumors.

"Surgeons use the ultrasound machine as an intra-operative tool to ensure complete excision of breast lesions with clear margins. It helps to ensure more accurate surgery with better cosmetic outcomes."

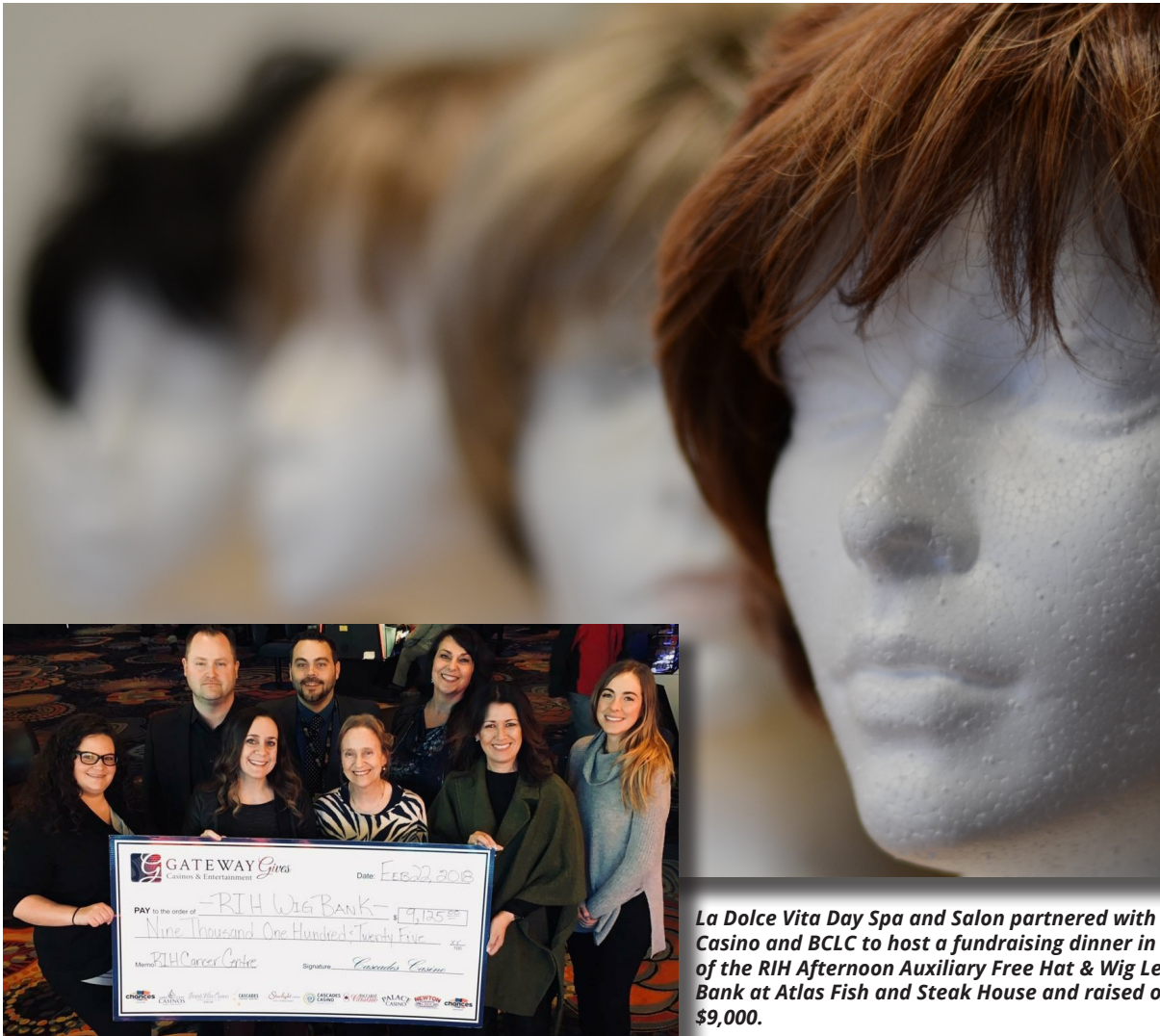
The new ultrasound machine is used not only for lumpectomies and partial mastectomies, but is also used for a variety of other purposes in the OR by the surgeons and anesthesiologists.

In order to fund this ultrasound, the Foundation approached three local pharmacies: Kipp-Mallery Pharmacy, Pratt's Compounding Pharmacy and Glover's Medicine Centre Pharmacy, who joined forces to purchase the machine for the OR and improve surgical outcomes for patients at RIH.

"The new ultrasound machine is such a great addition in the treatment of breast cancer"- Dr. Barton.

Doctors and UBC medical students who are studying at RIH can practice their imaging skills and technique using the ultrasound that was purchased for the Rae Fawcett Simulation Centre. This machine can be used in simulation training or can be signed out by individuals for extra practice. Specifically, Emergency Room and Internal Medicine physicians have been offered additional training with the new machine along with the Respiratory Therapy department.

COMMUNITY EVENTS



La Dolce Vita Day Spa and Salon partnered with Cascades Casino and BCLC to host a fundraising dinner in support of the RHH Afternoon Auxiliary Free Hat & Wig Lending Bank at Atlas Fish and Steak House and raised over \$9,000.

WIG BANK FUNDRAISER

The Foundation is fortunate to have many committed community members who are making a difference to healthcare at RIH through fundraising events. Along with long-standing fundraisers, passionate individuals approach the Foundation with new ideas each year—often inspired by an experience of their own.

Last November, Shelley Battistella, co-owner of La Dolce Vita Day Spa and Salon, partnered with Cascades Casino and BCLC to host a fundraising dinner in support of the RIH Afternoon Auxiliary Free Hat & Wig Lending Bank. Located in the RIH Cancer Clinic, the Hat & Wig Bank provides cancer patients with free access to both wigs and hats during their cancer treatment. As a salon owner and cancer survivor,

Shelley was inspired to help the Afternoon Auxiliary's program in their efforts to make patients feel good about themselves.

The fundraiser was held at Atlas Fish & Steak House and featured a gourmet meal and live auction which helped ensure the Wig Bank continues to have a wide selection of wigs available for patients regardless of age, ethnicity or hair colour. In addition, enough funds were raised to renovate the Hat & Wig Bank space with new wig display shelving, storage and salon accessories.

Last year alone, over 400 wigs and hats were borrowed from the Hat & Wig Bank at RIH .



Pictured: Anthony Salituro (centre) with his Aunt Josephine and Uncle Mario Bruno at the the 2017 Return of the Pink Ribbon Charity Ball. Josephine is a 22 year breast cancer survivor and the inspiration behind the event.

THE RETURN OF **THE PINK RIBBON CHARITY BALL**



"There are always ways to give back. For me, this is how I can do my part. Organizing an event is more than just making a guest list and throwing a fun party - it inspires others to be present and involved in their community."

- Anthony Salituro

After a three year hiatus, Anthony Salituro, Kamloops business owner and entrepreneur, organized the 17th Pink Ribbon Ball in support of cancer care at Royal Inland Hospital. In its revival, the Ball was once again a smashing success—raising over \$160,000 in just one night. Through this annual event, Salituro has set his sights on an incredible goal of raising \$1 million for cancer care at RIH.

This donation will fund new and innovative equipment for cancer patients receiving care and treatment at our local hospital.

With months of planning, Anthony and the dedicated members of the Pink Ribbon Ball Committee work incredibly hard to create a breathtaking ambiance and entertaining evening, all for a great cause.

OUR AUXILIARIES

RIH is fortunate to have not just one, but two dedicated Auxiliaries that fundraise for new equipment, and patient care items that ultimately improve the lives of patients and their families. Together, the Afternoon and Evening Auxiliaries to RIH are one of hospital's most significant supporters and give back to the hospital and community in a variety of ways.

Afternoon Auxiliary to RIH

With over 175 members, the Afternoon Auxiliary is actively involved in many fundraising endeavours both inside the hospital and in the community. One of these initiatives is the Thrift Seller second hand shop located on Victoria Street in Kamloops. This store generates funds on behalf of RIH and also provides community members with the opportunity to donate gently used items, which ultimately supports health care excellence at RIH. Over the past year, the Afternoon Auxiliary raised an astonishing \$380,929 for patient care equipment at RIH. Some of the equipment purchased last year included: an overbed warmer for Labor and Delivery to help to support the lives of RIH's tiniest patients and diagnostic scopes with the ability to identify and even prevent many conditions.



*Above: Representatives from the Evening Auxiliary
Right: Representatives from the Afternoon Auxiliary*

Evening Auxiliary to RIH

For over 55 years, the Evening Auxiliary to RIH has successfully fundraised for RIH through many different endeavours: Craft-A-Fairs, TV rentals, vending machines, and leasing the space to the Sacred Grounds coffee shop within RIH.

The savvy group of 25 raised over \$256,000 last year in support of vital equipment for RIH, providing much needed support to the Respiratory Therapy department, Neonatal Intensive Care Unit, and Labour and Delivery/Maternity Units.



These funds provided the hospital with a new ventilator, Bilicheck Meter, and mechanical ventilator. This equipment ensures that our hospital is able to provide the best possible care to our patients. They are welcome additions from both the staff and patients, who will greatly appreciate the increased efficiency and care that this equipment provides.

COMMUNITY EVENTS

\$100,000+

Pink Ribbon Charity Ball

\$50,000-\$99,999

ICCHA/Wish Fund Community Events
South Central Trucking & Industry
Charity Golf Tournament

\$10,000-\$49,000

The Amazing Race-Kamloops
Teck Highland Valley Copper: Mining
for Miracles and Fishing Derbies
97.5 The River's Toys For Kids Breakfast

IndoCanLinks Golf Tournament
Kamloops Fire Fighters Charitable
Society-Calendar Fundraiser

\$5,000-\$9,999

An Evening of Giving, benefiting the
Hat & Wig Lending Bank
New Gold Employee Fundraiser
Brenda Colman & Associates Mortgage
Fundraiser
City Furniture & Appliance (Kamloops)
Charity Golf Tournament

\$500-\$4,999

Hub International's Goals for Kids
Inferno! Art Productions - Music at
Work in support of cancer care
Interior Vault's Charity Shred Day
Kamloops Softball and Slo-pitch
Tournament
M.V.P. Authentics Inc. - Art Sales
Harper Mountain Lifts Ltd. - Oktoberfest

Honourable Mentions

Kamloops Recycled Truck & Auto Parts
- Customer Collection
Hot Nite in the City



Pictured: The Grover family, (left to right) Caleb, Justin, Oliver and Alicia, are monthly donors to the Foundation. For more information on ways to donate, please visit www.rihfoundation/waystogive

LETTER FROM GROVER FAMILY

RIH has always taken great care of our family. As local business owners, we believe in giving back to our community. With two sons, one who is eighteen years old and a younger son who is just three, we have not been strangers to the hospital over the years.

When our son Oliver was born, we felt as though the red carpet had been rolled out for us. And after spending time in the units getting to know the staff, we knew we wanted to give back to our hospital.

Now, with a busy 3 year old boy on our hands, we have visited the Emergency Department at RIH on a

few occasions. Every instance was handled quickly and professionally.

We believe in RIH and supporting our local hospital. We started giving a monthly contribution three years ago and from there, decided to continue. Our family will need this hospital throughout our lives and seeing the growth of services and support at RIH helps us know that our contributions have made a difference. It is a great feeling of accomplishment.

Sincerely,
Justin, Alicia, Caleb, and Oliver Grover

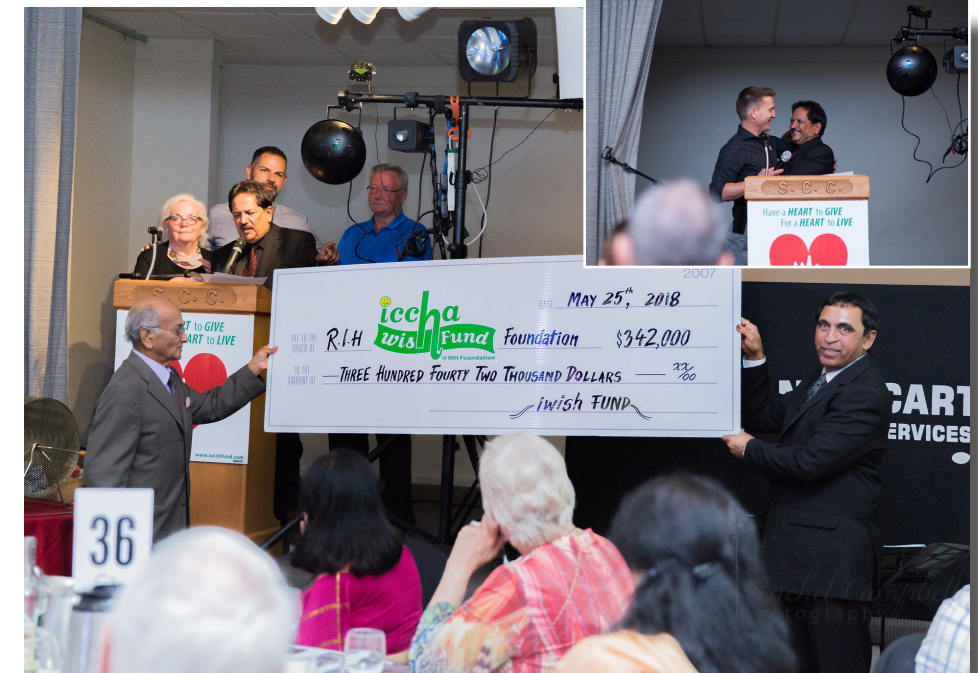
CARDIAC CARE AT RIH

Heart-felt Donations Support More Local Cardiac Care

Patients with serious cardiovascular illness will soon have access to more specialized cardiac care, thanks to Royal Inland Hospital's new Coronary Care Unit (CCU).

The new four-bed unit will be similar to an Intensive Care Unit but will be used exclusively for cardiac patients. The CCU will be located on 7 North at RIH, and is anticipated to open in 2019, after renovations are completed to convert rooms in the existing inpatient unit into an appropriate cardiac care space. Nursing staff will also be receiving specialized training to support this patient population.

The CCU's creation was made possible in large part due to the successful recruitment that has seen RIH's cardiologist complement grow from two to six specialist physicians. Led by Dr. Kobus Steyn, the expanded team of cardiologists is passionate about offering Kamloops the best cardiac care possible.



The cardiologists provide patient care

through a variety of programs and clinics including the new Rapid Access Clinic at RIH. The Rapid Access Clinic now provides patients with better access to cardiac physician specialists for urgent assessment and initiation of treatment with a streamlined referral system. The cardiologists

Above: Al Patel (2nd from left) with cardiac patients Tricia Sellmer, Colin Lyons, and Glenn Grant. Dr. Bas Gowd (left) and Anil Parekh (right) hold the cheque.

Inset: Al Patel and RIHF Board Chair, Eric Davis

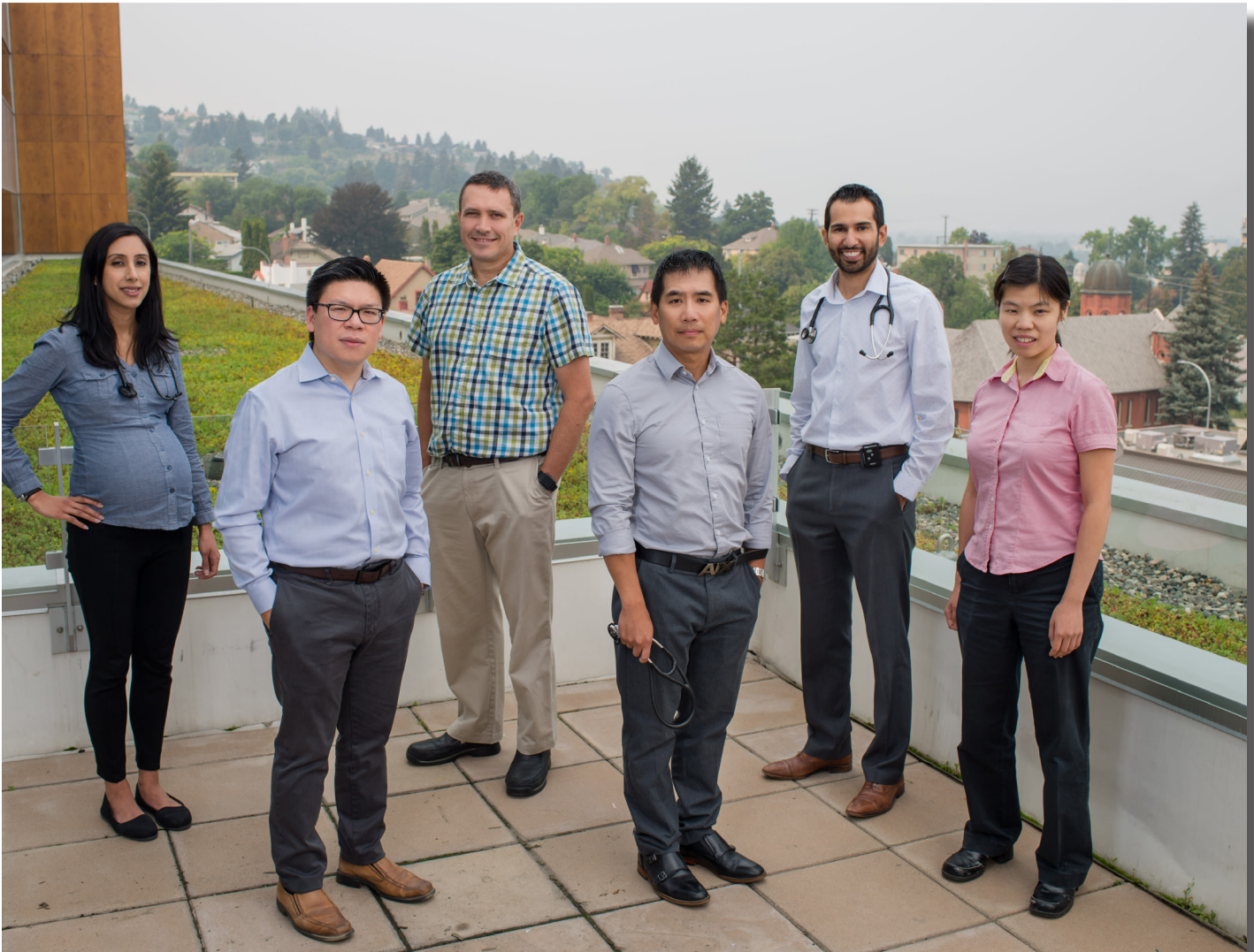
Bottom Left: June and Joe Butler

have also recently opened an outpatient clinic near the hospital where they can follow and monitor their patients on an ongoing basis. The longstanding Vascular Improvement Program (VIP) at RIH continues to offer patients with cardiovascular disease and heart failure with specialized care to help them manage their condition through exercise, diet, and medication which all contribute to a healthier lifestyle and better quality of life.

Fundraising for this specialized cardiac care has been well under way over the past year with many community members recognizing the importance of enhancing local cardiology services. Over \$450,000 in new equipment for the CCU will be funded through the support of donors.

Last December, a generous gift was made by June and Joe Butler—together with their son Glen—who donated \$200,000 to support the Cardiology





Pictured (left to right) : Dr. Suman Dhesi, Dr. Shawn Pun, Dr. Kobus Steyn, Dr. Stephen Chow, Dr. Steven Sra, and Dr. Karen Chu

department at RIH. June and Joe are long-time Kamloops residents who are dedicated to supporting health care in the community. “Kamloops is our home. As business owners, we have had tremendous support from the community; this is just our way of giving back,” explained June Butler.

The Iccha/Wish Fund also decided to pledge their support to the Cardiology department at RIH last year with a commitment to raise \$500,000 earmarked for current and ongoing cardiac care needs in Kamloops. Led by Founder Al Patel and Directors Dr. Bas

Gowd and Anil Parekh, the group has been on a mission ever since to raise funds and awareness for new cardiac services for RIH. At their annual gala held in May, Al was thrilled to announce that they had already surpassed their goal through the tremendous generosity of donors to the Iccha/Wish Fund.

Donors like Archie and Jane Dempster were vital in helping the Iccha/Wish Fund reach their goal so quickly. After retiring, the Dempsters re-located to Kamloops from Ontario to be closer to family in 2013. Inspired by reading about Al Patel and the Iccha/Wish Fund in the newspaper, they were pleased

to become members of the Founder’s Circle at the Foundation and contribute to enhancing cardiac services at RIH.

Additionally, a portion of a generous bequest from the late Ingrid and Dr. Ian Middlemass’ estate will be directed to the Iccha/Wish Fund. After immigrating to Canada in 1956, Dr. Middlemass worked as a radiologist at RIH from 1971 until his retirement in 1990.

The Foundation is grateful to every donor who has contributed to cardiac services at RIH over the past year and looks forward to the opening of the CCU in the coming months.

TRAINING & EDUCATION **RAISES THE BAR AT RIH**

Scholarship Recipient Helping Families

Through the support of generous donors, the Foundation is able to offer RIH staff the opportunity to apply for professional development scholarships twice annually that can be put towards a variety of educational programs and courses. Since the scholarship program started in 2015, over \$76,000 has been awarded to deserving staff.

Last October, Nicole Cant, an RN in the Maternity Unit, was successful in receiving a scholarship which allowed her to pursue her certification to become an International Boards Certified Lactation Consultant.

The World Health Organization, UNICEF, Canadian Pediatric Society, Perinatal Services BC and many more organizations promote exclusive breastfeeding until the age of 6 months with complementary foods and

continued breastfeeding for 2 years and beyond. Success in breastfeeding can set both moms and babies up for healthier lives.

With over 1,300 babies born at RIH every year, Nicole is now even better equipped to support new moms and babies while also mentoring her peers

to ensure everyone can benefit from her expertise: “I am grateful to the Foundation and the donors who choose to support staff education at RIH. This learning opportunity has increased my knowledge base tremendously and enhanced the level of care I can offer patients in our hospital. Thank you for believing in me.”



Left: Scholarship recipient, Nicole Cant

Bottom Left: Quinn, infant simulator

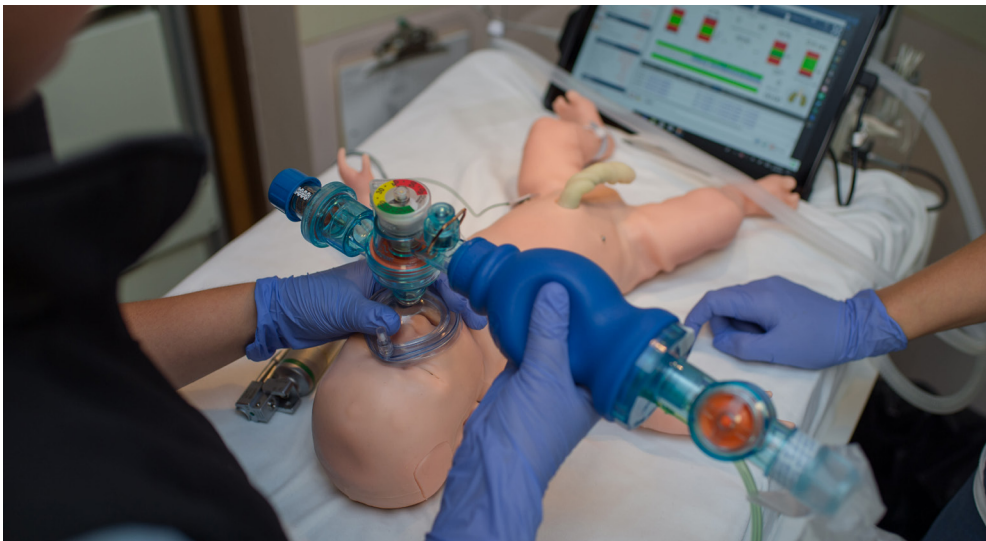
Rae Fawcett Simulation Centre's Newest Addition

On July 16th, the Rae Fawcett Simulation Centre welcomed a new addition to its simulator family; named “Quinn” in honour of being the fifth simulator in the Centre. Quinn is an infant simulator that can be either a boy or girl, and can

breathe, blink, cough and cry—just a few of its incredibly life-like functions. Quinn also has moving limbs, changing skin colour, multiple pulses and can even have seizures.

Staff and students training with the Simulation Centre can practice inserting an IV in its hands, scalp and umbilical cord. Quinn can have a chest tube inserted and have its heart monitored with real clinical equipment. Astoundingly, Quinn can even respond and provide feedback to a neonatal ventilator the same way a real baby would.

Chelsea Holmes, Simulation Educator at RIH explains, “Along with our adult and pediatric simulators, Quinn is quickly becoming an invaluable part of our Simulation Program. We have already spent significant time in the Neonatal Intensive Care Unit (NICU) where staff are becoming familiar with her features and can even practice their resuscitation skills with Quinn. The NICU team appreciates receiving immediate feedback on the quality of the team’s resuscitative efforts.”



2017/2018 Community Support

We greatly appreciate every gift received from our donors over the last year. Donors who gave \$1000 or more between April 1, 2017 and March 31, 2018 are recognized here with our sincerest thanks.

OUR DONORS

Individuals

\$200,000+

Joe, June and Glen Butler
Ronald and Rae Fawcett
Estate of Mathias Madsen Holst

\$50,000-\$199,999

Estate of Bruno (Bob) Comazzetto
James and Jessie Fedorak
Lorraine L'Heureux
Ken and Maureen Lepin
Estate of Rosie New

\$25,000-\$49,999

Kenneth and Elna Strand

\$10,000-\$24,999

Jim and Leanne Archibald
Ron and Eileen Bacon
Arlene Bourassa and Bruce Newton
James and Evelyn Bowersock
Estate of Claude Wm (Jotty) Dansey
Lucille Dempsey
Brenda and Michael Donaldson
Raymond and Donna Frolek
Clint Hilliard
Joseph E. and Sylvia Leduc
Valentin Meier*
Frank Quinn
Estate of Margaret Whiffin
Bruno and Elsie Wojak

\$5,000-\$9,999

Michael Blanchard
Walter Bopfinger
Dr. Twila Burgmann
Dr. S.K. (Jeevyn) Chahal and Evan Lewis
Dr. David V. Ciriani
Harvey and Barbara Comazzetto
Frank and Renza Digeso
Shirley Evans
Ken and Marilyn Ezzard
Tim Francis
Alan and Dawn Gozda
Elizabeth Hicks
Ben and Vivian Hildebrand
Robert and Mirella Holden
Amber Hooton and Christopher Owen
Estate of Hans Jensen
Dr. Maureen Leia-Stephen
Wally Mayer
Shirley A.L. McMillan
Jack Mendes and Nevada Skelly
Eugene and Pam Nagai
Mark and Sally Nairn
David Nickel
Rae F. Nixon
Laloo and Bhavana Patel
Bryan and Kristen Plowe
Darshan Singh and Gian Kaur Puni
Rob and Kim Splane
Arlene and John Walker
Dr. Robert Walter and Dr. C. Jill Calder

\$1,000-\$4,999

Judy Ahrweiler
Rick and Sharon Arnish
James and Janet Ashby
Frances Atkinson
Dr. Robert Baker
Surinder Bal
Dr. Marcia and Gordon Ballantyne
Mark and Bonnie Bartle
Jit Singh and Gurdev Kaur Basran
Sean and Lorianne Bennett
Margaret Bennett
Harvey and Ada Bentley
Kathleen Biagioni and Michael Schreiner
Dr. James and M. Christine Rey Bilbey
David and Carolyn Bilkey
Cameron Bird
Donald and Sheila Bogie
David and Joan Boon
Fred Braaten
James and Judy Brennan
John and Ann Brooks
Mark and Ellen Brown
Shirley Brown
Spencer and Janet Bryson
Gerhard and Marilyn Buller
Dr. Kurt and Diana Buller
Bonnie Cameron
Betty Campbell
Edna Candido
Jean Chacko
Chris Chan
Dale Collett
Craig and Sandy Cook
Russell Cundari
Bruce and Laverne Cunliffe
Darren and Danielle Cuthbertson
John and Jean Dahl
Roxanne Dauncey
Eric and Erin Davis
John and Colleen Davis
Dr. Grant and Brenda Del Begio
Sandra Dever
Mota S. Dhaliwal
Sarwan Dhillon
Carolyn Dymond
Dr. S. R. and Amrita Ebata
Mike Edwards
Brad and Malonie Emsland
Pam and Jason Fawcett
George Fraser
William and Nancy Garrett-Petts
David and Donna Gillespie
Jeff and Jane Glaicar
Dr. G. Basavana and Shankaramma Gowd
Justin and Alicia Grover
Bruce Hanna
Allan and Jean Harrison
Leslie J. and Margaret R. Hart
Eva Harvey
Onkar Singh Heer
Rick and Sandi Heney
Bryce Herman and Lisa Fuller
Lise Heroux
Sonia and Alvin Hickey

Maurice Hindle
Dr. Mavis Hollman
Harley Hook
Ernest Hubbard
Alan and Meg Innes
Kazuyo Isobe
Dr. Michael Jacoby and Dr. Pam Sproule
Dr. Gerald James and Dr. Alice Huang
Dr. Makam S. Jayaprakash
Joey Jorgenson
Sam Joshi
Rita Kennell
Jean Klepachek
Donald and Judi Knapp
Stewart and June Langdon
David Langevin
Loreen Lemke
Patricia and Patrick Linge
Gurpal Singh and Darshen Kaur Litt
Laura and Victor Lizzi
Ian Lurie
Sigmund and Rita Lyster
Surinder S. Mahal
Robert Mattioli
Dr. Raymond T. Maung
David and Betty Anne McCallum
Richard and Andrea McCurrach
Shirley McGillivray
Margot McMillan
Joan McMillan
R. Terry and Joan McQuillan
Ronald D. McTaggart
Guy Mercier Family
Andy and Johanna Middelburg
Ingrid Middlemass*
Michael Mikalishen
Debbie Milner Lively
Shaun and Sheila Minten
James and Joan Moffat
Dr. Curtis Mohamed
Jean Moorcraft
Tom and Sharon Moore
Anne Munro
Dr. Suraya Naidoo
Harish and Bhadrashila Natha
Joyce Neis
Harjinder and Satbir Nijjar
John Nykyforchyn
Audrey Obayashi
Nadia Olafson
Tarn and Amrita Ollek
Colene Palmer
Anil R. and Jyoti Parekh
Dr. Elizabeth Parfitt and Dr. Paul Campsall
Gita Patel
Leigh Pedersen
Kevin Petersen
Dean Pierobon
Sue and Tim Porter
Kerri Pridde
Melvin and Ruth Recchi
Ward and Yvonne Reddick
Marina Redmile
Dr. Russ Reid and Dr. Jane McGillivray
Adrian Reynoldson
Dr. Todd and Lesley Ring

*Indicates deceased

OUR DONORS

-Continued-

Dr. Bob Rishiraj
 Dr. Steven and Kathy Rollheiser
 Lorraine C. Romanin
 Lori Roy
 Rosa Russo
 Robert and Patricia Ryan
 Audrey Saigeon
 Joan Sanders
 Hartmut W. Sellmer
 Patricia L. Sellmer
 George and Gertrude Sherlock
 Roy Simpson
 Manju Singh
 Eric Spence
 Dr. Jim Stephen
 Dave and Helga Stobbe
 Dr. Shirley Sze
 Jean Tash
 Dr. Susan Tevendale
 Florence Thomson
 Petreus and Cristina Tsaparas
 Johannes and Melita Van Dyk
 Dr. Alan and Tamara Vukusic
 Dr. Kenneth and Charlotte Wagner
 Raymond and Evelyn Wallace
 Stan Warsimage
 Barry Wilford
 Sara A. Williams
 Dr. Donald and Pierrette Wilson
 Ronald Wittenbecher
 Jeng and Yok Wong

Organizations

\$100,000+

Afternoon Auxiliary to RIH
 Evening Auxiliary to RIH

\$50,000-\$99,999

Mr. and Mrs. P.A. Woodward's Foundation

\$25,000-\$49,999

Ashcroft & District Health Care Auxiliary
 Kamloops Blazers Scholarship & Education Society
 Kamloops Ford Lincoln Ltd.
 RBC Foundation

\$10,000-\$24,999

Can-Ital Ladies Society
 Enbridge
 Flaman
 Gateway Casinos & Entertainment Limited
 IndoCanLinks Golf Tournament
 Kamloops Fire Fighters Charitable Society
 Kamloops Honda
 Kamloops Medical Imaging Inc.
 PHI Group, Charan Rai
 RJames Western Star Freightliner Ltd.
 Robert L. Conconi Foundation
 TB Vets Charitable Foundation
 Teck Highland Valley Copper
 The Vavenby Hometowners

Valley First
 Vancouver Foundation
 Variety - The Children's Charity
 Warner Rentals Ltd.
 Zimmer AutoGroup

\$5,000-\$9,999

A & T Project Developments Ltd
 Argus Homes Ltd.
 BCLC
 Brenda Colman & Associates
 Brentwood Enterprises LP
 City Furniture & Appliance (Kamloops) Ltd.
 Clearwater Curiosity Shoppe
 Davis Wealth Management
 Excel Industries Ltd.
 Fulton & Company
 Glover's Medicine Centre Pharmacy
 Hegyi Refrigeration
 HUB International Insurance Brokers
 Kamloops Paddlewheelers Lions Club
 Kamloops Street Rod Association
 KGHM Ajax Mining Inc.
 Kiwanis Club of Kamloops
 KPMG
 Lee's Music
 Lifeline Systems Canada
 Metro Reload Ltd.
 New Gold Inc.
 Royal Bank of Canada
 Smith Chevrolet Cadillac Ltd.
 Subway Kamloops
 Sun Country Toyota
 Top 40 Woodworks

\$1,000-\$4,999

100 Mile District General Hospital Auxiliary
 Abigail Anderson Photography
 Anchor Equipment (2005) Ltd.
 Argo Road Maintenance (Thompson) Inc.
 Arrow Transportation Systems Inc.
 Atlas Steak & Fish House
 Barsi Enterprises Ltd.
 Bayer CropScience Canada
 BC Interior Community Foundation
 BDO Canada LLP
 Best Western Plus Kamloops Hotel
 Best Western Williams Lake
 Bill Todd Ltd.
 Brendan Shaw Real Estate Ltd.
 Buzz's Auto Body
 Chahal Priddle LLP
 CI Investments
 Cleanway Supply Inc.
 Cookson Motors Ltd.
 Cummins Western Canada
 Cundari & Company Law Corporation
 Daimler Truck Financial
 Dearborn Ford
 Emsland & Associates Insurance Services Ltd.
 Enterprise Entertainment Ltd.
 Erwin's Fine Baking & Delicatessen
 Fidelity Investments
 Fountain Tire (Edmonton)
 Fraternal Order of Eagles Aerie 3453
 Gerald K. Watson Law Corporation

Glaicar Sanford Wealth Partners of RBC
 Dominion Securities
 Green Acres Vegetable Farm Ltd.
 Halston Bridge Esso
 Horizon North
 HPF Engineering Ltd.
 HUB International Limited
 Hunter Design
 Infernal Art Productions
 Interior Display Services Ltd.
 International Brotherhood of Electrical Workers Local 993
 Jordans Rugs Ltd
 Kal Tire
 Kami Countertops (2005) Ltd.
 Kamloops Accommodation Association
 Kamloops Computer Centre
 Kamloops Dance Academy
 Kamloops Gurudwara Sahib Society
 Kamloops Korean Sa-Rang Church
 Kamloops Recycled Truck & Auto Parts
 Kamloops Regional Correctional Centre
 Kamloops Surgical Centre Ltd.
 Kenroc Building Materials Co. Ltd.
 Kipp-Mallery Pharmacy
 KM Contracting Ltd.
 Knights of Columbus Bishop Harrington Council 9508 Westsyde
 La Dolce Vita Day Spa & Salon
 Ladies Auxiliary to Kamloops Shrine Club
 Long Beach Lodge & Resort
 Loyal Order of Moose 1552
 Lyons Landscaping Ltd.
 MacKenzie Financial Corporation
 Manulife Financial
 McElhanney Consulting Services Ltd
 MCM Real Estate Ltd.
 MD Management Limited
 Mike Weigele Helicopter Skiing
 MJB Lawyers
 Munden Ventures Ltd.
 North Kamloops Elks Lodge #469
 North Kamloops Lions Club
 North Shuswap Lions Club
 NRI Distribution Inc.
 Order of Eastern Star Adah No. 16
 Oriental Gardens Restaurant
 Peterbilt Pacific Inc.
 Petland
 Piva Hay Ranches Ltd.
 Portfolio Interiors
 Pratt's Compounding Pharmacy
 Provincial Employees Community Services Fund
 Purity Feed Company Ltd.
 Ra Hair Studio & Spa
 Ralph Nelson Smith Logging
 RBC Dominion Securities Inc
 River City Nissan
 Rivershore Chrysler Dodge Jeep
 Rivershore Estates & Golf Links
 Roman Catholic Bishop of Kamloops
 Rotary Club of Kamloops Daybreak
 Save On Foods
 Savona Trucking Association
 South Kamloops Secondary School 2017 Graduating Class
 Spice of India Cuisine & Sweet Shop Ltd.
 Team Equipment Ltd.

TELUS
Tenisci Piva
Tim Hortons
Tong and Geraldine Louie Family Foundation
Triton Environmental Consultants Ltd.
Twin Valley Wellness Clinic
Urban Appeal Landscaping Ltd.
Valley Roadways Ltd.
Western Roofing Master Roofers Ltd
Williams Lake Loghauers Association
Woodland Equipment Inc.

In Memory of

Memorial gifts show a loving concern for all who look to RIH for care - now and in the future. These gifts fund patient care equipment and other special programs that promote healthcare excellence in our region. These memorial gifts were received from April 1, 2017- Mar 31, 2018

Marianne Abbadie
Lawrence Adrian
Don Andrews
Jes Ballam
Barbara (Betty) Barrons
Larry Bedard
Roy Ivan Bennett
Bernie Bergstrom
James Bleskie
Mary Boivin
William Ronald Browett
Carmela Bruno
Marcello Bruno
Janice Buller
Ingrid Caines
Tom Campbell
Gary Candido
Kevin Carson
Ethel Chappow
Douglas Clark
Donald Clough
Larry Cochlan
Bruno (Bob) Comazetto
Carmela Comazetto
Marv Crawford
Gord Crichton
Frank Cundari
Brenda Dalla Gassa
Robert Davoren
Banta Singh Dhillon
Raj Kaur Dhillon
Tomas Dobrovolny
Roy Dolsen
Kamaljit K. Dosanjh
Doreen Dunlop
Wendy E. Dunn
Jane Everatt
Terrance Farrell
Linda (Lolly) Fehr
Chad Michael Ferris
Charlotte Elizabeth (Sandy) Flaherty
Dan Flottorp
Daisy Forde
Florence Jean Frilund

Meena Gajjar
Michel Garneau
Ann Enabelle Gorek
Shirley Gray
Kirk Guenther
Leslie Hall
Frances Hanna
Keith Hanna
David and Majella Hanson
Sharon Harder
Ingram & Gladys Harestad
Harbhajan Kaur Heer
Cathy Hewitt
Donald Hicks
Michael R Hitt
John Hoglund
Douglas Holmes
Linda Hooton
Elizabeth A. Hunter
Ken Hustler
Teichi Isobe
Hans Jensen
Dr. Raj Joneja
Dan Jorgesen
Bob Kennell
Marilyn King
Jack Kirkpatrick
Jean Yoshiko Kitamura
Mirja Koivisto
Laurie Langlois
Len Larson
Mary Legge
Marcelle Leibel
Janke Lettinga
Margaret Lyall
James (Jack) MacKinder
Bishnee Kaur Mahal
Butta Singh Mahal
Julie Mattioli
Joseph William (Bill) McCoid
Richard McGillivray
Melanie L. McIntosh
Robert Dean McLean
Franco Mercuri
Dr. Ralph (Doc) Minnich
Frank Morello
John Moss
Clarence Neis
Brent Nowicki
Marilyn Oikawa
Orval H. Olafson
Bob Olsen
Dr. Gautam Parghi
Shantaben C. Patel
Kathleen Mary Veronica Peppler
Norma Phelan
Gordon Piva
Giuseppe (Joe) Posteraro
Donald Powell
Ron Recchi
William Redenbach
Richard Reid
James Rezmam
Joeseeph Rinaldo
David Robinson
Francis Rogliano
Mary Romano
Wayne Rusk
Dave Russell
Keith Russill

Almo Salvati
Teresa Scordo
Wolfram Sellmer
Richard Sharpe
Len Short
John Siggers
Graham Skinner
James C. Smith
Eleanor M. Stewart
Lena Storey
Merv Storzuk
Margaux Sutherland
Edward M. Takahashi
Stan Tash
Patrick Taylor
Ray Teare
Mohinder Singh Thiara
Jason Burns Thiessen
Bill Thomson
Joe Trotta
Jack Turner
Cyrille Vidal
Graf Goetz Aberdar von Seckendorff
June Weaver
Gord Webb
Ralph Werbowsky
John Williams
Marie A. Williams
Christiana Wittenbecher
June Wolanski
Dorothy Wolff
Nolan Thomas Wycherley
George A. Wyse
Leonard York
Kirsten Young
Darrin Yusishen

**All efforts have been made to ensure the accuracy of our donor listings. If an error has occured, or if you would like to change how we recognize you, please call the Foundation office at 250-314-2325*

Special thanks to

LISA NOVAK

PHOTOGRAPHY



ROYAL INLAND HOSPITAL
FOUNDATION

RIH FOUNDATION

311 Columbia St
Kamloops, BC, V2C-2T1

Phone

(250) 314-2325

Email

RIHF@interiorhealth.ca

Website

www.rihfoundation.ca